



AL-RIDHA: Jurnal Pengabdian Kepada Masyarakat

ISSN: 2986-8637

Doi: <https://doi.org/10.58223/al-ridha.v1i1.52>

Received: 04-02-2023, Revised: 15-03-2023, Accepted: 18-03-2023



This is an open access article under licensed [Creative Commons Attribution NonCommercial 4.0 International License](https://creativecommons.org/licenses/by-nc/4.0/)

The Compilation of Village Map in Community Service Activities in Blumbungan Village, Larangan District, Pamekasan Regency

¹Nasrullah, ²Rizal, ³Muzammil, ⁴Wahedi Muharrom, ⁵Khairul Umam

Sekolah Tinggi Agama Islam Darul Ulum Banyanyar

¹anastaciou88@gmail.com

Abstract

Blumbungan Village is one of the villages with the largest area and densest population in Pamekasan Regency. So that information is needed in the form of administrative maps and public facilities that can be used to support the village government in managing their households. The purpose of this community service is village mapping as a basis for regional development in the Blumbungan Village area, Pamekasan Regency. The methods used include field surveys, documentation stages, the process of making maps, temporary print outs, permanent print outs, making Proof of Styrofoam and submitting maps. Community service activities in Blumbungan Village produced a village map containing geospatial information that can be found in the area. The information is in the form of administrative area boundaries, transportation networks or infrastructure, waters, facilities and infrastructure. The image displayed on the village map provides an overview of the land cover in Blumbungan Village. Land use at certain posts has the possibility of land conversion, so that it becomes a new land use. Therefore, it is necessary to update the map presentation from time to time to adapt to the current situation and conditions in Blumbungan Village. In development planning, maps are used as material for regional analysis. In addition, the level of settlement density can be used as material for analysis of development planning in the form of public facilities that can be utilized by the community. Blumbungan Village is dominated by settlements, only a few green open spaces are available. Diversion of land for green open space can be planned by utilizing maps.

Keywords: *Equitable Development, Map, Blumbungan Village*

Abstrak

Desa Blumbungan merupakan salah satu Desa dengan luas wilayah dan padat penduduk terbesar di Kabupaten Pamekasan. Sehingga diperlukan informasi berupa peta administrasi dan fasilitas umum yang dapat digunakan sebagai penunjang pemerintah desa dalam mengurus rumah tangganya. Tujuan pengabdian masyarakat ini adalah pemetaan desa sebagai dasar dalam pembangunan daerah kawasan Desa Blumbungan Kabupaten Pamekasan. Metode yang digunakan di antaranya survei Lapangan, tahap Dokumentasi, proses pembuatan peta, print out sementara, print out tetap, pembuatan Prta dari Styrofoam dan serah terima Peta. Kegiatan pengabdian masyarakat di Desa Blumbungan menghasilkan peta desa yang berisi informasi geospasial yang dapat ditemui di wilayah tersebut. Informasi tersebut berupa batas wilayah administrasi, jaringan atau infrastruktur transportasi, perairan, sarana dan prasarana. Gambar yang ditampilkan pada peta desa tersebut memberikan gambaran tutupan lahan di Desa Blumbungan. Penggunaan lahan pada pos-pos tertentu mempunyai kemungkinan terjadi alih fungsi lahan, sehingga menjadi pemanfaatan lahan baru. Oleh karena itu, penyajian peta perlu dilakukan pembaharuan seiring berjalannya waktu untuk menyesuaikan situasi dan kondisi terbaru yang ada di Desa Blumbungan. Dalam perencanaan pembangunan, peta tersebut dimanfaatkan sebagai bahan analisis wilayah. Selain itu, tingkat kerapatan permukiman dapat dijadikan bahan analisis untuk perencanaan pembangunan berupa fasilitas - fasilitas umum yang dapat dimanfaatkan oleh masyarakat. Desa Blumbungan didominasi permukiman, hanya sedikit ruang terbuka hijau yang tersedia. Pengalihan lahan untuk ruang terbuka hijau dapat direncanakan dengan memanfaatkan peta tersebut.

Kata Kunci: *Pemerataan Pembangunan, Peta, Desa Blumbungan*

INTRODUCTION

Based on the main duties of the lecturer, one of which is community service and is an embodiment of the academic community who is present in the community which involves the academic community such as students, lecturers, alumni, and other education staff. Apart from that, it is also an embodiment of the Tri Dharma of Higher Education, namely service which in its implementation cannot be separated from the other two dharma. Making village maps is one of the efforts to carry out an integral part of the Tri

Dharma of Higher Education, namely community service by voluntarily donating several maps to village government agencies. Based on the Regulation of the Minister of Home Affairs of the Republic of Indonesia Number 45 of 2016 concerning Guidelines and Confirmation of Village Boundaries, a village map is needed to fulfill this as a supporting instrument in the implementation of the regulation. The One Map Policy Geoportal launched by the President of the Republic of Indonesia, Mr. Joko Widodo, aims to provide an accurate and accountable map of

Jakarta, on Tuesday (11/12). Presidential Regulation Number 9 of 2016 and Economic Policy VIII which regulates the One Map Policy Acceleration Program since 2016. In implementing the Nawa Cita one of the priority programs is the One Map Policy. With this One Map Policy, provision of infrastructure, issuance of permits and land rights, development planning, as well as various national policies can refer to accurate spatial data. Blumbungan Village is one of 11 Districts/Villages in Larangan District, Pamekasan Regency.

Blumbungan Village has an area of 35,625.521 ha (96.40%) used as agricultural land (rainfed rice fields and dry land), for settlements covering an area of 332,279 ha (1%) and the rest is for private forests and others. Blumbungan Village also has 32 Community Units (RW) and 80 Neighborhood Units (RT) with a population of approximately 18,016 people (Population data document quoted from BPS 2020 page). (BPS, 2023) Blumbungan Village is one of the areas that has an important role in the development of Pamekasan Regency, especially in development & economic aspects. Aspects of development that continue to be improved by the Blumbungan Village government to develop its territory and make it a special attraction for the region, besides

that in Blumbungan Village many improvements have been made to aspects of regional development.

Blumbungan Village has the largest area in Larangan District. Blumbungan Village is one of the economic centers and trade centers of Larangan District because there are public facilities in the Village/Village such as Markets, Regional Mineral Water Companies (PDAM), Savings and Loans Cooperatives and so on. Unlike the other Village District/Villages in Larangan District, the facilities are not as complete as Blumbungan Village. However, even though public facilities are complete, it turns out that Blumbungan Village has the highest number of poor and socially vulnerable people in Larangan District with 1127 poor households and more than 1500 socially vulnerable households (Documentation of interview results with Blumbungan Village Secretary). It seems that the development that is in the regional center has not been felt by the people in the hamlet or village because of the limited village budget and spending and the absence of village original income (PAD). That is, the results of development have not been able to achieve even distribution of people's lives. Unequal development results result in disparities between regions. One such gap is in the

economic field. The existence of economic disparities between one region and another is caused by the driving factor, namely the imbalance in the availability of infrastructure.

One of the efforts made by the government to reduce inequality is to issue development policies, including by issuing Law no. 32 of 2004 concerning Regional Autonomy. Therefore, regions have the authority to manage their own households by utilizing the potential that exists in their respective regions. The village or Village District is the basic level which is the object of regional development. To create a better area, it must first be repaired from below, in this case the village or Village District level. Therefore, the focus on equitable development at the village or Village District level should not be neglected for the sake of supporting the realization of a prosperous area. The existence of public facilities such as markets, PDAM and Saving and Load Cooperative in Blumbungan village does not guarantee the economic conditions of the community.

The map is a picture of the earth's surface displayed in a flat field. The appearance contained in the map can be used as a source of information by the government as a policy maker and planning expert to make decisions in the development

process. Maps made in the last year or updated using the latest data will of course produce data or information that is factual and up to date so that local government policies are considered to have integrity.

Blumbungan Village is the 4th largest sub-district in Pamekasan Regency. Public facilities such as the Health Assistance Center (PUSTU), PDAM, and markets that can be accessed by both local and foreign residents are almost all available in the village. The area is dominated by densely populated settlements. So that information is needed in the form of administrative maps and public facilities that can be used to support the village government in managing their households. However, the existence of a village map in Blumbungan Village is still very simple, because it only provides information on area boundaries. The maps in the Village District are also not in accordance with cartographic principles and do not display information optimally, so that the use of maps is also not optimal, they are only used for wall displays. Therefore, it is necessary to update by improving the quality of village maps in Blumbungan Village so that village rankings can be utilized by optimizing the presentation of good geospatial information.

The purpose of this community service activity is village mapping as a basis for regional development in the Blumbungan Village area. Increasing village welfare requires support from various parties, one of which is a university. Therefore, this community service is a form of our support in improving village welfare by optimally utilizing geospatial information.

RESEARCH METHODOLOGY

Community service activities in the form of making village maps were carried out in Blumbungan Village, Larangan District, Pamekasan Regency. This activity consists of several stages, namely a preliminary survey in the form of an application for a permit from the Blumbungan Village Government and providing an explanation regarding the purpose of the activity and the benefits that can be obtained. In addition, an explanation of the flow of activities was also conveyed so that partners fully understood the flow of implementation of activities from start to finish. Furthermore, the primary data collection stage is in the form of a survey of public facility points in Blumbungan Village as well as secondary data from Blumbungan Village

apparatus documents and from the Central Bureau of Statistics for Pamekasan Regency in 2020 in the process of making a village map. Then the process of making a village map, after which it is temporarily printed for consultation with village officials. If possible, print the village map at a scale of 1:5000 that has been consulted with A0 size and framing/finishing is carried out. The final stage is the procession of handing over village maps. Materials and tools that support the implementation of activities in Blumbungan Village are Landsat TM imagery with a spatial resolution of 30 meters recorded on June 13, 2020 which has been georeferenced using geometry correction techniques, Geographic Information System (GIS) software, laptops/computers, and printing equipment. The following is an explanation of the stages of community service in Blumbungan Village:

1. Preliminary survey by visiting the Village Hall to explain the aims and objectives of the activity to local village officials, explain the flow of implementation of activities, and explain the benefits that can be obtained from village map procurement activities.
2. The preparation stage by collecting supporting data in the village map making process. The data is in the form of area

boundaries according to archival data in Blumbungan Village, the latest georeferenced data for 2020, coordinates of public facilities at partner locations.

3. The process of making a map by first digitizing it to make area boundaries that match the village data archive. After that, the data input for the coordinates of public facilities and other public features such as rivers and roads obtained from secondary data is carried out. The final step in the build process is layout and temporary molding.
4. The results of the temporary print out are consulted first with the village apparatus whether they are appropriate or need to be added to other information.
5. Then print out the village map that has been consulted with size A0 and framing/finishing is carried out.
6. The result of the map printout is then used as a miniature image made of styrofoam.
7. Submission of village maps to village officials was carried out at the Blumbungan Village Office witnessed by community representatives represented by the RT head in the Village.

Participation of partners in the implementation of this activity is

to help collect supporting data for making village maps, prepare an agenda for handing over village maps, and provide socialization on the use of village maps to the community so that an understanding of the benefits of village maps is not only for the consumption of village officials but also for the wider community. generally accessible free of charge.

RESULTS AND DISCUSSION

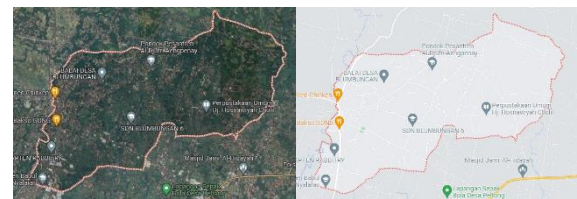
This community service activity was carried out on Monday 19 Oktober 2020 at the Pendapa or Village Meeting Hall of Blumbungan Village, Larangan District, Pamekasan Regency offline by implementing health protocols because the implementation was still in a pandemic condition. This activity consists of a series of events. Community service activities in Blumbungan Village produced a village map containing geospatial information that can be found in the area. This information is in the form of administrative area boundaries, transportation networks or infrastructure, waters, facilities and infrastructure. The fundamental contribution of this activity is to increase the ability of the local community and village government to plan, implement and evaluate development planning efforts that will be carried out in the future

according to the needs and conditions of the local community by looking at the existing maps already made. In addition, there are legal reports as proof of scientific documents with community service in the form of community service reports in Blumbungan Village, Pamekasan Regency.

Village maps were created using GIS software, namely ArcGIS and the SAS Planet website. The SAS Planet page is used to obtain high-resolution image data, namely the Landsat TM image with a spatial resolution of 30 meters recorded on October 19 2020 until November 13 2020 which has been georeferenced with a geometry correction technique so that the appearance of the recorded object can be seen clearly. ArcGIS is used for data processing starting from image cropping, adding attributes, and layout. The presentation of village maps has been adjusted to Regulation of the Head of the Geospatial Information Agency Number 3 of 2016 concerning Technical Specifications for Presentation of Village Maps. Knowing what potential information exists in a village or sub-district and for regional development needs with more specific data, namely by making a village potential map.

The maps in Blumbungan Village previously did not meet the

standard rules for writing maps other than only presenting past or past information. Therefore it is necessary to update by improving the quality of village maps in Blumbungan Village so that village rankings can be utilized by optimizing the presentation of good geospatial information. Therefore, it is hoped that this map will be able to improve the quality of the village map in Blumbungan Village so that it can be utilized and useful for village officials for various things. Figure 1 below is a map of the Jabres District village presented at a scale of 1:5000.



Map Picture 1

The map shown in Picture 1. provides an overview of the land cover in Blumbungan Village. Land use at certain points has the possibility of land conversion, so that it becomes a new land use. Changes in land use can occur for certain purposes. Therefore, the presentation of the map needs to be updated from time to time to adjust to the current conditions of the appearance of the earth's surface in Blumbungan Village, so that the presentation of the map is more accurate and its utilization is more optimal. In terms of development

planning, maps can be used as material for regional analysis by taking into account the existing land cover in the planning area. In addition, the level of settlement density can also be used as material for analysis of development planning in the form of public facilities that can be utilized by the community. The area of Blumbungan Village is dominated by settlements. There are only a few green open spaces available. Diversion of land for green open space can also be planned by utilizing maps.



Map Picture 2

The documentation in Figure 2 is a forum for the procession of handing over maps in community service which was carried out at the alit pendapa of Blumbungan Village, Larangan District, Pamekasan Regency. In photo (a) there is a group photo session consisting of a team of volunteers, faculty representatives, representatives of Jebres village officials represented by the Head of Blumbungan Village and the village

secretary as well as representatives of village partners such as the Local Village Facilitator (PLD) & Bhabinkamtibmas. Photo (b) is a greeting from the head of the dedication team. Furthermore, photo (c) is documentation at the time the forum took place and finally photo (d) was handed over by the head of the community service team to the Head of Jebres Village. The partners are very grateful for the existence of the map so they are willing to establish partnerships in the future for other academic interests. The hope is that the map can be used as well as possible and used properly.

Based on Figure 1 it can be seen the level of satisfaction of service partners based on 5 (five) indicators that have been determined. The total number of respondents is 5 respondents who were present at the submission of the village map, then they will be presented according to their categories, namely Satisfied, Fairly Satisfied, and Not Satisfied. In the first indicator regarding "Service planning carried out by STAI Darul Ulum Banyuanyar Pamekasan students is appropriate and fulfills the benefits and satisfaction of partners in the service program" gets a satisfaction score of 90%. The success rate of 90% being satisfied with the service planning carried out by STAI Darul Ulum

Banyuanyar students is an indicator that can explain the success of village map delivery activities that have taken into account the needs of partners and the suitability of program planning. which has been set.

The second indicator "The of Program implementation is in accordance with the targets required by partners" with a satisfaction score of 100%. This means that the provision of Village Maps is in accordance with the targets set by partners and in accordance with partners' needs. The third indicator "Program implementation runs smoothly" obtains a satisfaction level with a score of 88% and a satisfaction level of 12%. This was due to several technical problems in the field during the village map submission process. However, this did not reduce the enthusiasm of the students and service team partners and did not reduce the essence and meaning of the map submission activity. The fourth indicator "The need to continue program evaluation and monitoring" obtains a satisfaction level with a satisfaction score of 100%.

The continuity of this activity is in the form of monitoring and evaluating activities in utilizing the maps that have been made and can be useful for local village officials and the people of

Blumbungan Village in the future. In order to increase the knowledge and understanding of the people of Blumbungan Village so that they can understand their own territory through the maps that have been made, similar activities must be carried out continuously. This is a recommendation based on the evaluation and monitoring that has been carried out. Activities can be in the form of ongoing counseling to all the people of Blumbungan Village and its surroundings. Then the second collaboration can be carried out with agencies that have or are related to geographic elements to increase understanding related to geographic information in Blumbungan Village, Pamekasan Regency itself. In addition, this map is also expected to be a reference for sustainable development in Blumbungan Village, Pamekasan Regency. So that it can increase the potential that exists in Blumbungan Village, Pamekasan Regency. Blumbungan Village has a lot of potential, including the existence of independent small businesses (UKM). Through the making of the Blumbungan Village Map, it is hoped that besides being able to increase the equity of development, it is also possible to map the potential and continue to develop the potential that exists in Blumbungan Village, Pamekasan Regency.

CONCLUSION

The village map displays geospatial information that can be used as material for analysis by the government in making a policy. The map of Blumbungan Village provides information on the appearance of the earth's surface in the area, such as residential land cover, green open spaces, vacant land, and public facilities. This information can be used as material for development planning in Blumbungan Village, Larangan District, Pamekasan Regency. From this service activity it is hoped that it will not stop here, meaning that there is continuity from this activity, namely in the form of monitoring and evaluating activities in utilizing the maps that have been made and can be useful for local village officials and the people of Blumbungan Village in the future. Then the second can be carried out in collaboration with agencies that have or are related to geographic elements to increase understanding regarding geographic information in Blumbungan Village, Pamekasan Regency.

REFERENCE

BPS, (2023). *HASIL LONG FORM SENSUS PENDUDUK 2020 KABUPATEN PAMEKASAN*. <https://pamekasankab.bps.go.id/publication/2023/02/10/39c5245ee8ac50431276f023/hasil-long-form-sensus-penduduk-2020-kabupaten-pamekasan.html>

<https://kumparan.com/nadyanandiraputri/pemekaran-desablumbungan-sebagai-pembangunan-desalwvpzB30Eg5/3>

<https://pamekasankab.bps.go.id/statictable/2020/07/15/344/banyaknya-penduduk-menurut-desadan-jenis-kelamin-dikecamatan-larangan-2018.html>

<https://pamekasankab.bps.go.id/statictable/2020/07/15/344/banyaknya-penduduk-menurut-desadan-jenis-kelamin-dikecamatan-larangan-2018.html> diakses pada tanggal 04 Maret 2022

Pemerintah Desa Blumbungan (2019). Dokumen Profil Desa Blumbungan Kecamatan Larangan Kabupaten Pamekasan.

Pemerintah Desa Blumbungan (2020). Dokumen Rencana Pembangunan Jangka

Menengah Desa (RPJMDes)
Tahun 2020-2026.

Setyawan, D., Laila, N., &
Sudarsono, B. (2018). Analisis
Potensi Desa Berbasis Sistem
Informasi Geografis (Studi
Kasus: Kelurahan Sumurboto,
Kecamatan Banyumanik,
Kabupaten Semarang). Jurnal
Geodesi Undip, 7(4), 247-254.

Sukwika, T. (2018). Peran
Pembangunan Infrastruktur
terhadap Ketimpangan
Ekonomi Antar Wilayah di
Indonesia. Jurnal Wilayah dan
Lingkungan, 2(1), 115-130.
Bakosurtanal. (1999). Peta RBI
Digital 1:25.000 Lembar 1408-
214 Jebres, Badan Koordinasi
Survei dan Pemetaan
Nasional, Cibinong, Bogor

Sutanto. (1986). Penginderaan Jauh
Jilid I. Yogyakarta: Gadjah
Mada University Press. Bafdal,
N., Amaru, K. & Pareira,
B.M.P. 2012. Bahan Ajar-Sistem
Informasi Geografis. UNPAD
Press: Universitas Padjadjaran.

Bafdal, N., Balis, R, L., Dwiratna, S.,
& Amaru, K. (2014).
Penyusunan PetaPotensi Desa
Agrowisata Berbasis
Masyarakat di Desa Cibuntu
Kecamatan Pasawahan
Kabupaten Kuningan. Jurnal
Aplikasi Ipteks untuk

Masyarakat, 3(2), 81-87.
doi:10.24198/v3i2.8353

Waljiyanto, Rochmad, M., Iqbal, M,
T., Ruli, A., Untung, R.,
Gondang, R., Ni Putu Praja, C.
(2019). Pembuatan Peta Foto
Udara Kelurahan Wates.
Jurnal Pengabdian dan
Pengembangan Masyarakat,
2(2), 8-12.
doi:10.22146/jp2m.4229